



A closer look at The Gary Residence



RESIDENTIAL CARE IN
DOWNTOWN MONTPELIER



The Gary Residence



Discover

the comfortable life that awaits
you here at The Gary Residence.

Our vibrant senior living community is housed in a beautiful Victorian home in downtown Montpelier. It's a unique place that offers daily fulfillment, safety, and a rich array of conveniences and amenities.

Our private suites are located on the second and third floors of our building, and each includes a private bath and pleasant neighborhood views. Residents enjoy as much privacy as they like while a welcoming, close-knit senior community awaits them just outside their suite door.

As a licensed residential care home, we provide room, board, personal care, general supervision, nursing oversight, and medical management. We welcome you to learn more about The Gary Residence! Contact us at **(802) 223-3881** for more information and a personal tour.

Our Private Suites

Second floor

Suite 2-1

315 SF

1 Bedroom, Full Bath



Suite 2-2

334 SF

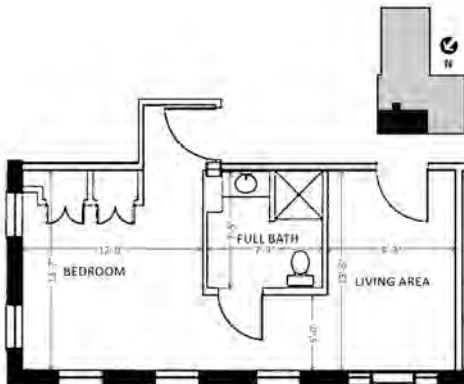
1 Bedroom, Full Bath, Living Area



Suite 2-3

408 SF

1 Bedroom, Full Bath, Living Area



Suite 2-4

410 SF

1 Bedroom, Full Bath, Living Area



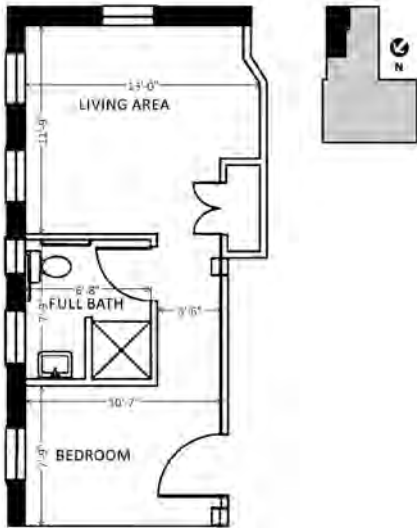
Our Private Suites

Second floor

Suite 2-5

319 SF

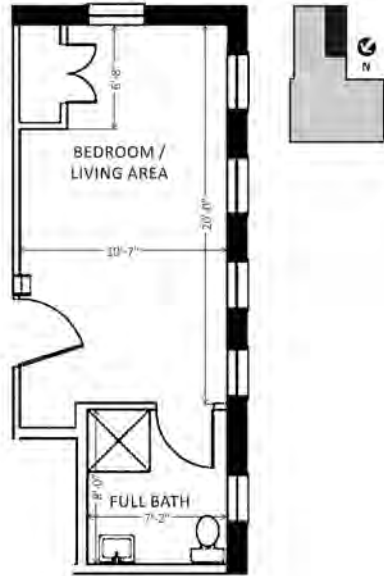
1 Bedroom, Full Bath, Living Area



Suite 2-6

270 SF

1 Bedroom/Living Area, Full Bath

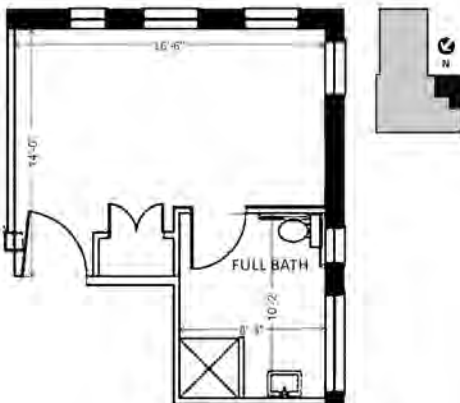


Third floor

Suite 3-1

315 SF

1 Bedroom, Full Bath



Suite 3-2

334 SF

1 Bedroom, Full Bath, Living Area

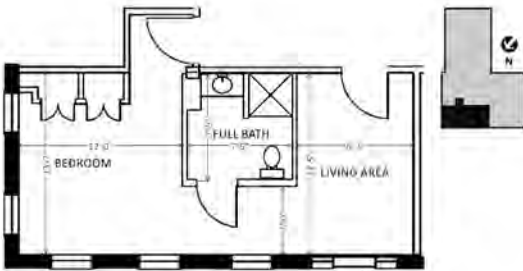


Third floor

Suite 3-3

408 SF

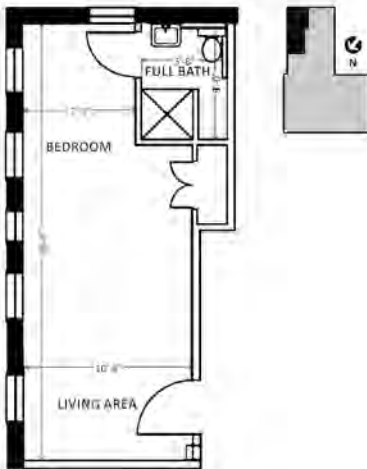
1 Bedroom, Full Bath, Living Area



Suite 3-5

319 SF

1 Bedroom/Living Area, Full Bath



Suite 3-7

208 SF

1 Bedroom, Full Bath



Suite 3-4

410 SF

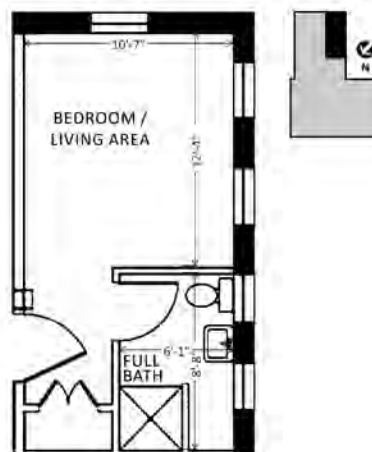
1 Bedroom, Full Bath, Living Area



Suite 3-6

227 SF

1 Bedroom/Living Area, Full Bath



- All suites are wheelchair accessible
- Each room has cable television service, individual thermostat control, and a telephone jack
- Cleaning and laundry services provided
- Suites may be furnished with one's own furniture

Frequently Asked Questions

How many people live at The Gary Residence?

We have 13 suites that accommodate individuals or couples.

Is The Gary Residence a nursing home?

No. The Gary Home is a fully-licensed Level 3 Residential Care home.

Is there an age requirement?

We welcome individuals and couples aged 62 and older.

May I bring my own furniture?

Yes, your unit is yours to furnish and decorate as you wish.

May I bring my pet?

Cats are welcome to be part of The Gary Residence, as long as you are appropriately able to care for them. Please ask for a copy of our pet policy.

Is cable and WiFi available?

Yes, the basic cable package is included in your monthly fee. If you want additional packages, you may contact the cable company.

There is free public wireless internet (WiFi) throughout the entire building for residents and family to use.

What if my health changes?

We understand that health changes are part of aging. Should we not be able to meet your needs, we will help you coordinate with other high quality health care providers in the area and provide you with a smooth transition.

May I have guests for meals and overnight visits?

Yes, guests are always welcome at The Gary Residence. If you are having friends or family join you for a meal, please let our dining room staff know 24 hours in advance.

Is transportation available?

Yes. Our private transportation service operates Monday through Friday. Transportation for more personal use, such as appointments or banking, require advance scheduling.

Does the fee increase annually?

On average, we increase the monthly fee between 2-3% a year. We give residents a 60-day notice about this price increase.

Is it easy to apply and move in?

Our staff is available at every step to help make the application and moving process as smooth as possible. It is a thorough process, but not complicated.

How to Become a Resident

- Contact Administration at **(802) 223-3881** to schedule an appointment and tour.
- If we have a waiting list, you may secure your place on the list by completing our Priority Waiting List Agreement and submitting a deposit.
- Fill out our Application for Residency, which includes financial and medical information, and submit it to us.
- Review our Residency Agreement & Resident Handbook and let us know if you have any questions or unique circumstances we should be aware of.
- Set a date and time for move-in. Our staff will be on hand to help coordinate move-in.
- A One-time Community Fee of \$1,500 and first month's rent will be due on the day of move-in.



Monthly Fees

Our monthly fee includes rent, utilities, all meals, weekly housekeeping, laundry, transportation, 24-hour staff assistance, routine apartment maintenance, activities and outings, and use of all common areas and amenities.

Each resident's monthly fee is slightly different, as they are based on the square footage of each suite. Please see our Monthly Fees Sheet, or visit our website at www.thegaryresidence.com for our current rates and details.

Cost Comparison Worksheet

| Monthly Budget Item | Your Current Monthly Cost | Your Cost at The Gary Residence |
|---|---------------------------|---------------------------------|
| Housing | | |
| Rent / Mortgage Payment | \$ | \$ (Monthly fee) |
| Real Estate Taxes | \$ | Included |
| Property Liability Insurance | \$ | \$ |
| Utilities | | |
| Heat | \$ | Included |
| Electricity / Gas | \$ | Included |
| Water / Sewer | \$ | Included |
| WiFi | \$ | Included |
| TV (basic cable) | \$ | Included |
| Food | | |
| Groceries / Meals | \$ | Included |
| Home Maintenance | | |
| General Maintenance and Servicing | \$ | Included |
| Repairs / Replacement | \$ | Included |
| Trash / Yard Care / Snow Removal | \$ | Included |
| Housecleaning / Laundry (weekly) | \$ | Included |
| Transportation | | |
| Gas, maintenance, repairs, insurance, etc | \$ | Included |
| Health / Social Care Service | | |
| 24-hour Staffing / Emergency Response | \$ | Included |
| Regular Health Screening | \$ | Included |
| Medication Management Assistance | \$ | Included |
| Recreation / Social Activities | \$ | Included |
| Fitness Classes | \$ | Included |
| Personal Care | \$ | Included |
| TOTAL | \$ | \$ |

2017 Edition



The Gary Residence

TEL: (802) 223-3881

FAX: (802) 223-4468

149 Main Street, Montpelier, Vermont 05602

www.thegaryresidence.com