



# A Closer Look at The Gary Residence



RESIDENTIAL CARE IN  
DOWNTOWN MONTPELIER



**The Gary Residence**  
RESIDENTIAL CARE | MEMORY CARE



# Discover

the comfortable life that awaits you here at The Gary Residence.

Our vibrant senior living community is housed in a beautiful Victorian home in downtown Montpelier. It's a unique place that offers daily fulfillment, safety, and a rich array of conveniences and amenities.

Our private suites are located on the second and third floors of our building, and each includes a private bath and pleasant neighborhood views. Residents enjoy as much privacy as they like while a welcoming, close-knit senior community awaits them just outside their suite door.

As a licensed residential care home, we provide room, board, personal care, general supervision, nursing oversight, and medical management. We welcome you to learn more about The Gary Residence! Contact us at **(802) 223-3881** for more information and a personal tour.

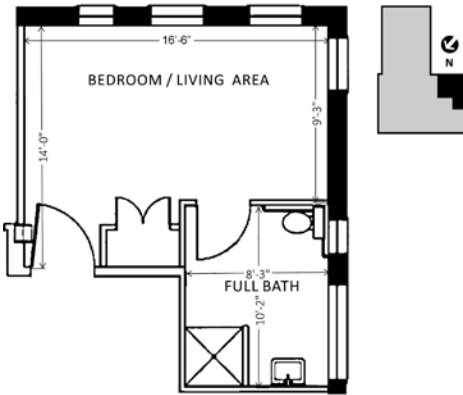
# Our Private Suites

## Second Floor

### Suite 2-1

315 SF

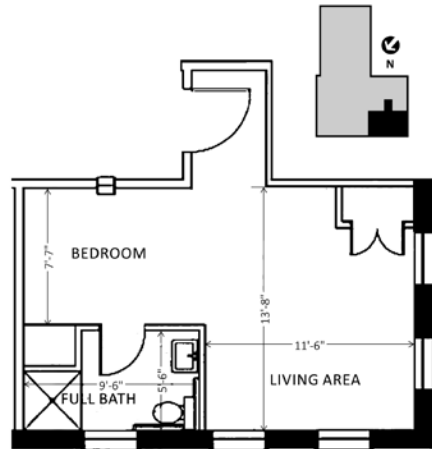
1 Bedroom/Living Area, Full Bath



### Suite 2-2

334 SF

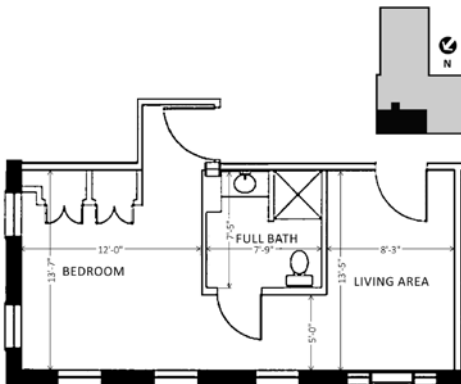
1 Bedroom, Full Bath, Living Area



### Suite 2-3

408 SF

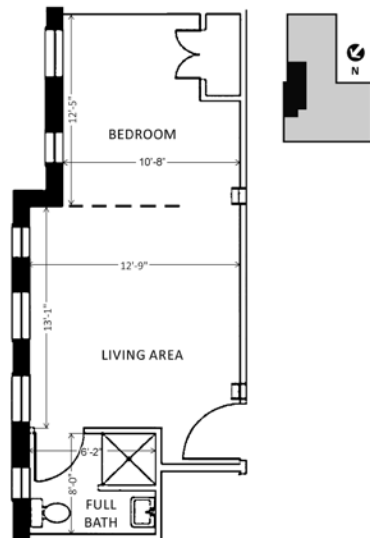
1 Bedroom, Full Bath, Living Area



### Suite 2-4

410 SF

1 Bedroom, Full Bath, Living Area

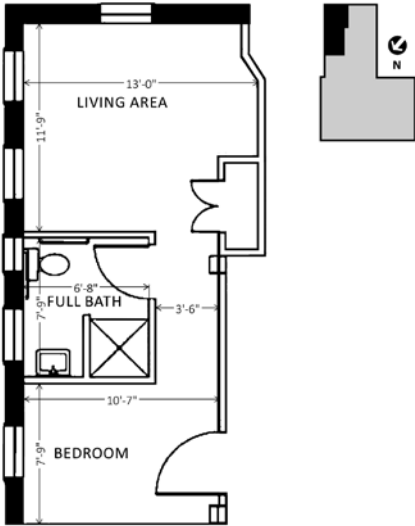


# Our Private Suites

## Second Floor

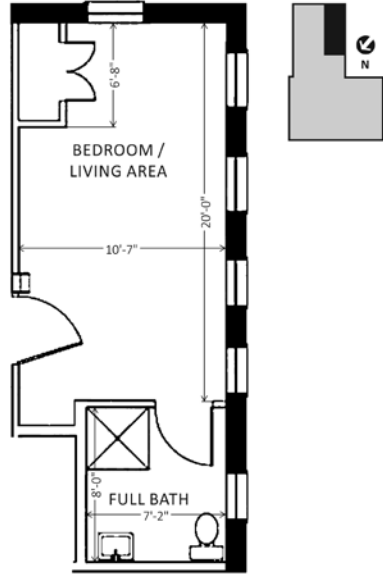
**Suite 2-5** 319 SF

1 Bedroom, Full Bath, Living Area



**Suite 2-6** 270 SF

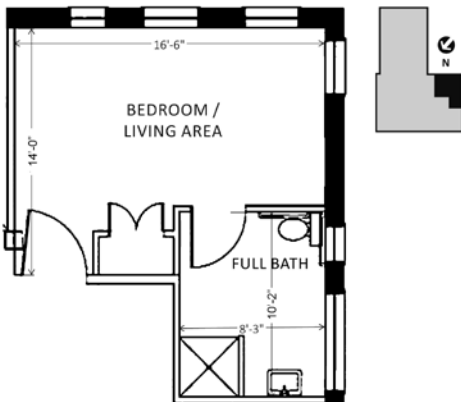
1 Bedroom/Living Area, Full Bath



## Third floor

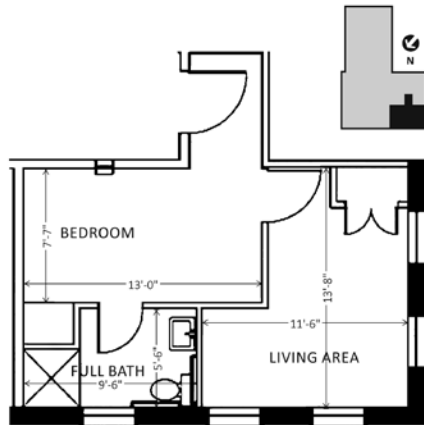
**Suite 3-1** 315 SF

1 Bedroom/Living Area, Full Bath



**Suite 3-2** 334 SF

1 Bedroom, Full Bath, Living Area

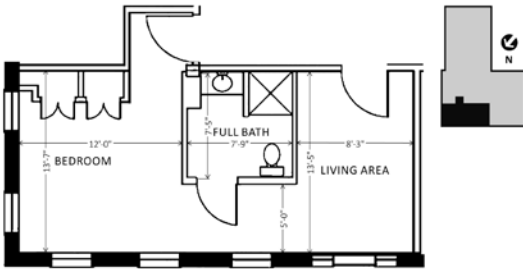


# Third Floor

## Suite 3-3

408 SF

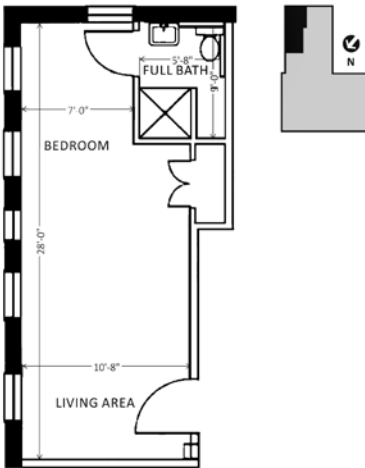
1 Bedroom, Full Bath, Living Area



## Suite 3-5

319 SF

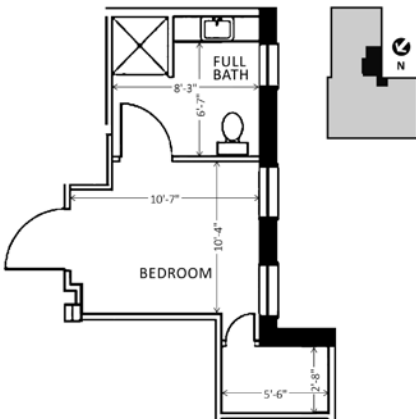
1 Bedroom, Full Bath, Living Area



## Suite 3-7

208 SF

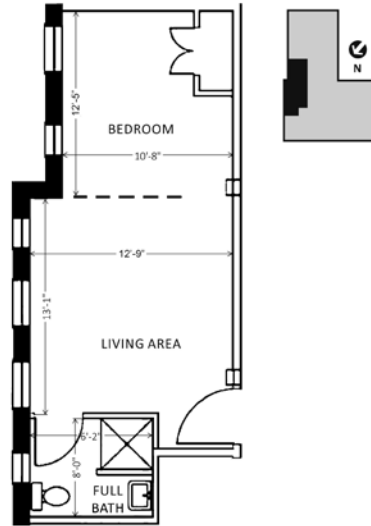
1 Bedroom, Full Bath



## Suite 3-4

410 SF

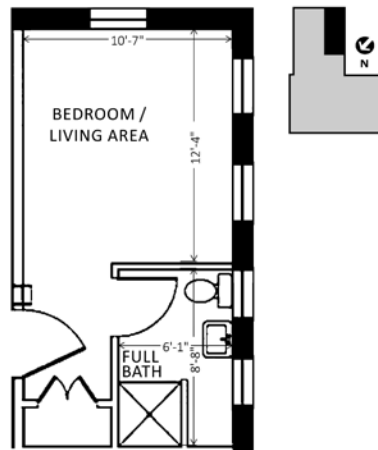
1 Bedroom, Full Bath, Living Area



## Suite 3-6

227 SF

1 Bedroom/Living Area, Full Bath



- All suites are wheelchair accessible
- Each room has cable television service, individual thermostat control, and a telephone jack
- Cleaning and laundry services provided
- Suites may be furnished with one's own furniture

# Frequently Asked Questions

## **Who owns The Gary Residence?**

The Gary Residence is owned/operated under O.M. Fisher Home, Inc., a 501(c)3 non-profit governed by a local board of trustees. O.M. Fisher Home, Inc. was established in 1941 and owns/operates Westview Meadows at Montpelier, as well.

## **How many people live at The Gary Residence?**

We have 13 suites that accommodate individuals or couples.

## **Is The Gary Residence a nursing home?**

No. The Gary Residence is a licensed Level 3 Residential Care home.

## **Is there an age requirement?**

We welcome individuals and couples age 62 and older.

## **Is there a waiting list to come to The Gary Residence?**

There is a Priority List program if you want to be considered for a particular style of Suite or if you want to plan several years in advance for your future.

## **May I bring my own furniture?**

Yes, your unit is yours to furnish and decorate as you wish.

## **What if my health changes?**

We understand that health changes are part of aging. Should we not be able to meet your needs, we will help you coordinate with other high-quality healthcare providers in the area and provide you with a smooth transition.

## **May I bring my pet?**

Unfortunately, we cannot accommodate pets at this time.

## **Are cable and WiFi available?**

Yes, the basic cable package is included in your monthly fee. If you want additional packages, you may contact the cable company.

There is free public wireless internet (WiFi) throughout the entire building for residents and family to use.

## **May I have guests for meals and overnight visits?**

Your guests are always welcome at The Gary Residence. If you are having friends or family join you for a meal, please let our dining room staff know 24 hours in advance.

## **Is transportation available?**

Yes. Our private transportation service operates Monday through Friday. Transportation for more personal use, such as appointments or banking, require advance scheduling.

## **Does the monthly fee increase annually and if so, is it announced ahead of time?**

On average, we increase the monthly fee between 3-4% a year. We give residents a 60-day notice about this price increase.

## **Is it easy to apply and move in?**

Our staff is available at every step to help make the application and moving process as smooth as possible. It is a thorough process, but not complicated.

# How to Become a Resident

- Contact Administration at **(802) 223-3881** to schedule an appointment and tour.
- To secure your place on the waiting list, complete our Priority Waiting List Agreement and submit a deposit.
- When a vacancy becomes available, you will be asked to fill out our Application for Admission, which includes your financial and medical information. We will also collect signed release forms to access your medical information from your providers.
- Our nursing team will meet with you for an in-person interview and medical assessment. This step will allow us to provide you with a decision about your eligibility and admission.
- Review our Residency Agreement & Resident Handbook and let us know if you have any questions or unique circumstances we should be aware of.
- Set a date and time for move-in. Our staff are happy to help you and your family coordinate this.
- A one-time community fee and first month's rent will be due on the day of move-in.



## Monthly Fees

Our monthly fee includes rent, utilities, all meals, weekly housekeeping, laundry, transportation, 24-hour staff assistance, routine apartment maintenance, activities and outings, and use of all common areas and amenities.

Each resident's monthly fee is slightly different, as they are based on the square footage of each suite. Please see our Monthly Fees Sheet, or visit our website at [www.thegaryresidence.com](http://www.thegaryresidence.com) for our current rates and details.



# Cost Comparison Worksheet

Monthly Budget Item	Your Current Monthly Cost	Your Cost at The Gary Residence
<b>Housing</b>		
Rent / Mortgage Payment	\$	\$ (Monthly fee)
Property Liability Insurance	\$	\$
<b>Utilities</b>		
Heat	\$	Included
Electricity / Gas	\$	Included
Water / Sewer	\$	Included
WiFi	\$	Included
TV (Basic Cable)	\$	Included
<b>Food</b>		
Groceries / Meals	\$	Included
<b>Home Maintenance</b>		
General Maintenance and Servicing	\$	Included
Repairs / Replacement	\$	Included
Trash / Yard Care / Snow Removal	\$	Included
Housecleaning / Laundry (Weekly)	\$	Included
<b>Transportation</b>		
Gas, Maintenance, Repairs, Insurance, Etc.	\$	Included
<b>Health / Social Care Service</b>		
24-Hour Staffing / Emergency Response	\$	Included
Regular Health Screening	\$	Included
Medication Management Assistance	\$	Included
Recreation / Social Activities	\$	Included
Fitness Classes	\$	Included
Personal Care	\$	Included
<b>TOTAL</b>	\$	\$

2024 Edition