



# Memory Care at The Gary Residence

*A Beautiful Place to Live*



DOWNTOWN  
MONTPELIER, VERMONT



**The Gary Residence**  
RESIDENTIAL CARE | MEMORY CARE

## Clara's Garden at The Gary Residence

A photograph of a living room. In the center is a fireplace with a grey stone surround and a black metal insert. Above the fireplace is a light-colored wooden mantel. On the mantel, there is a small potted plant on the left and a round analog clock on the right. Above the mantel is a large, arched mirror with a dark, ornate frame. The wall behind the fireplace is finished with light blue horizontal shiplap. To the left of the fireplace are two windows with white frames and blinds. A small book titled 'DANIEL SIBU' is on the windowsill. To the right of the fireplace is a light-colored wooden bookshelf with several books. In the foreground, the back of a large, round, brick-patterned armchair is visible. The floor is covered in a light-colored, textured carpet. The ceiling has a recessed light fixture.

Where feelings  
of home and  
peace of mind are  
*abundant*



**In keeping with our longtime tradition of caring and quality community living for seniors, we are pleased to offer Clara's Garden Memory Care at The Gary Residence in downtown Montpelier.**

Serving those living with Alzheimer's Disease and other forms of dementia, this full-service living community offers beautiful and peaceful private and semi-private accommodations for up to 18 residents.

Clara's Garden is thoughtfully and purposefully designed and built to provide the utmost comfort, safety, and enjoyment for our residents. With our high staff-to-resident ratio, 24/7 care program, and structured activities, you can rest assured that your loved one will be nurtured, cared for, and connected.



# The Very Best in Memory Care Living



Clara's Garden provides a safe, secure environment while offering the dignity and the warmth of home to those living with memory loss.

Our living community is designed for comfort with soothing lighting and colors, and a single-floor layout with suites and common areas situated in a circular pathway to avoid dead-end spaces.

Our 24/7 staffing ensures your loved one gets the care they need — when they need it — while therapeutic activities provide meaningful connections for a high quality of life.

## Services

Full dining services:  
3 meals a day, 24/7 snacks

Housekeeping and laundry

24-hour support for  
personal care

Nursing oversight, including  
medication management

24-hour emergency  
response program

Individualized programs  
and therapeutic activities

## Amenities

In-room TV hookups with  
cable option

Television in shared living  
areas

Private bathrooms

Spa room with whirlpool tub,  
hair and nail station

Secure outdoor garden patio

All utilities included

## Best Friends™ Approach

Our philosophy of care follows the Best Friends™ Approach, a world-renowned best practice when caring for people with Alzheimer's or dementia. Best Friends™ uses the essential elements of friendship (respect, empathy, support, trust, and humor) to care for people living with memory loss and adapt to their remaining strengths and abilities.



Semi-Private Suite



# Living Accommodations

The living accommodations at Clara's Garden are purpose-built, designed for comfort and calm. The soothing décor and ample privacy of the suites combined with close-by amenities ensures your loved one's needs are always met.

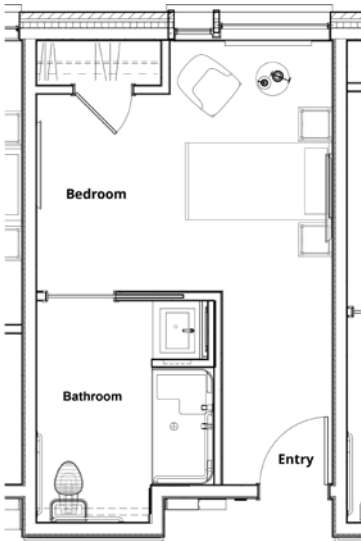
Private Suite



# Suite & Floor Plans

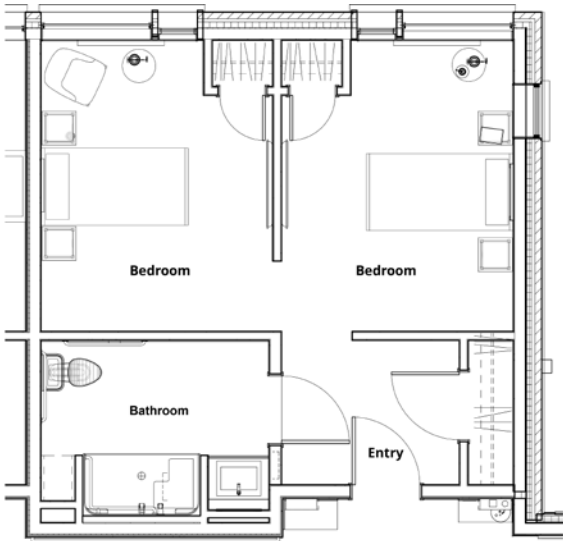
## Private Suite

1 Bedroom, 1 Full Bath



## Semi-Private Suite

2 Bedrooms, 1 Full Bath



## Memory Care Floor Plan

Clara's Garden offers 12 private suites, three semi-private suites, an enclosed patio/garden area, and a central common area for walking, dining, activities, and quiet reading.



# Frequently Asked Questions



## **Who owns The Gary Residence?**

The Gary Residence is owned/operated under O.M. Fisher Home, Inc., a 501(c)3 non-profit governed by a local Board of Trustees. O.M. Fisher Home, Inc. was established in 1941 and owns/operates Westview Meadows in Montpelier, as well.

---

## **Who is eligible to live at Clara's Garden?**

Individuals age 62 and older who are experiencing some form of memory loss.

---

## **Is there a waiting list for Clara's Garden?**

There is a Priority Waiting List program if you want to be considered for a particular suite or if you want to plan several years in advance.

---

## **How long must I commit to living at Clara's Garden?**

Most residents stay on a long-term basis. However, a 30-day residency agreement is signed at the time of occupancy.

---



## **May I bring my own furniture?**

Yes, your suite is yours to furnish and decorate as you wish.

---

## **What if my health changes?**

We understand that health changes are part of aging. Should we not be able to meet your needs, we will coordinate with other high-quality health care providers in the area and provide you with a smooth transition.

---

## **Can my family have dinner with me?**

Absolutely! Family and friends are always welcome at The Gary Residence. Our Residential Care and Memory Care Programs each have their own dining rooms, with extra room. Just speak with our staff to make arrangements.

---

## **Can I bring my dog or cat?**

Unfortunately, Clara's Garden residents are not able to have pets.

---

## **Does my physician need to be involved in the application process?**

Your primary care physician will complete a health assessment form. Our Resident Care Director will also meet with you to help determine the appropriate level of care for you, and upon admission will complete your individual care plan.

---

## **What levels of care are offered at The Gary Residence?**

We offer licensed Residential Care and Special Care Unit (Memory Care).

---

## **Can my spouse live with me even if they don't need Memory Care?**

Our memory care program offers a holistic approach for specific needs, and therefore would not be an appropriate setting for someone who does not experience memory loss.

---



# How to Become a Resident at Clara's Garden

## Steps to becoming a resident:

- Contact Administration at **(802) 223-3881** to schedule an appointment and tour.
- To secure your place on the waiting list, complete our Priority Waiting List Agreement and submit a deposit.
- Fill out our Application for Admission, which includes your financial and medical information. We will also collect signed release forms to access your medical information from your providers.
- Our admissions team will meet with you for an in-person interview and medical assessment. This step will allow us to provide you with a decision about your eligibility and admission.
- Review our Residency Agreement & Resident Handbook and let us know if you have any questions or unique circumstances we should be aware of.
- Set a date and time for move-in. Our staff are happy to help you and your family coordinate this.
- A one-time community fee and first month's rent will be due on the day of move-in.

# Cost Comparison Worksheet

Monthly Budget Item	Your Current Monthly Cost	Your Cost at Clara's Garden
<b>Housing</b>		
Rent / Mortgage Payment	\$	\$ (Monthly fee)
Property Liability Insurance	\$	Included
<b>Utilities</b>		
Heat	\$	Included
Electricity / Gas	\$	Included
Water / Sewer	\$	Included
WiFi	\$	Included
TV (Basic Cable)	\$	Included
<b>Food</b>		
3 Meals Per Day	\$	Included
<b>Home Maintenance</b>		
General Maintenance and Servicing	\$	Included
Repairs / Replacement	\$	Included
Trash / Yard Care / Snow Removal	\$	Included
Housekeeping / Laundry	\$	Included
<b>Transportation</b>		
Gas, Maintenance, Repairs, Insurance, Etc.	\$	Included
<b>Health / Social Care Service</b>		
24-Hour Staffing / Emergency Response	\$	Included
Regular Health Screening	\$	Included
Medication Management Assistance	\$	Included
Recreation / Social Activities	\$	Included
Fitness Classes	\$	Included
Personal Care	\$	Included
<b>TOTAL</b>	\$	\$



# A caring tradition in Vermont senior living



Named after Dr. Clara E. Gary—one of Vermont's first female physicians—The Gary Residence is built on the tradition of quality care for more than 80 years.

Proudly sponsored by the O.M. Fisher Home Foundation, The Gary Residence is a distinguished living community that also includes Westview Meadows.

Founded in 1919, O.M. Fisher Home is rich in history and tradition as one of Vermont's oldest non-profit organizations dedicated to funding senior living. In its vibrant and accessible downtown Montpelier location, The Gary Residence has a longstanding reputation for being a quality senior living community, offering a warm, tasteful, and welcoming environment that feels like home to its residents and visitors.



**The Gary Residence**  
RESIDENTIAL CARE | MEMORY CARE

**TEL:** (802) 223-3881

**FAX:** (802) 223-4468

149 Main Street, Montpelier, Vermont 05602

[www.thegaryresidence.com](http://www.thegaryresidence.com)